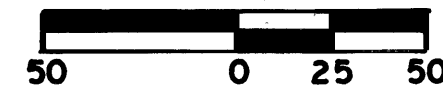


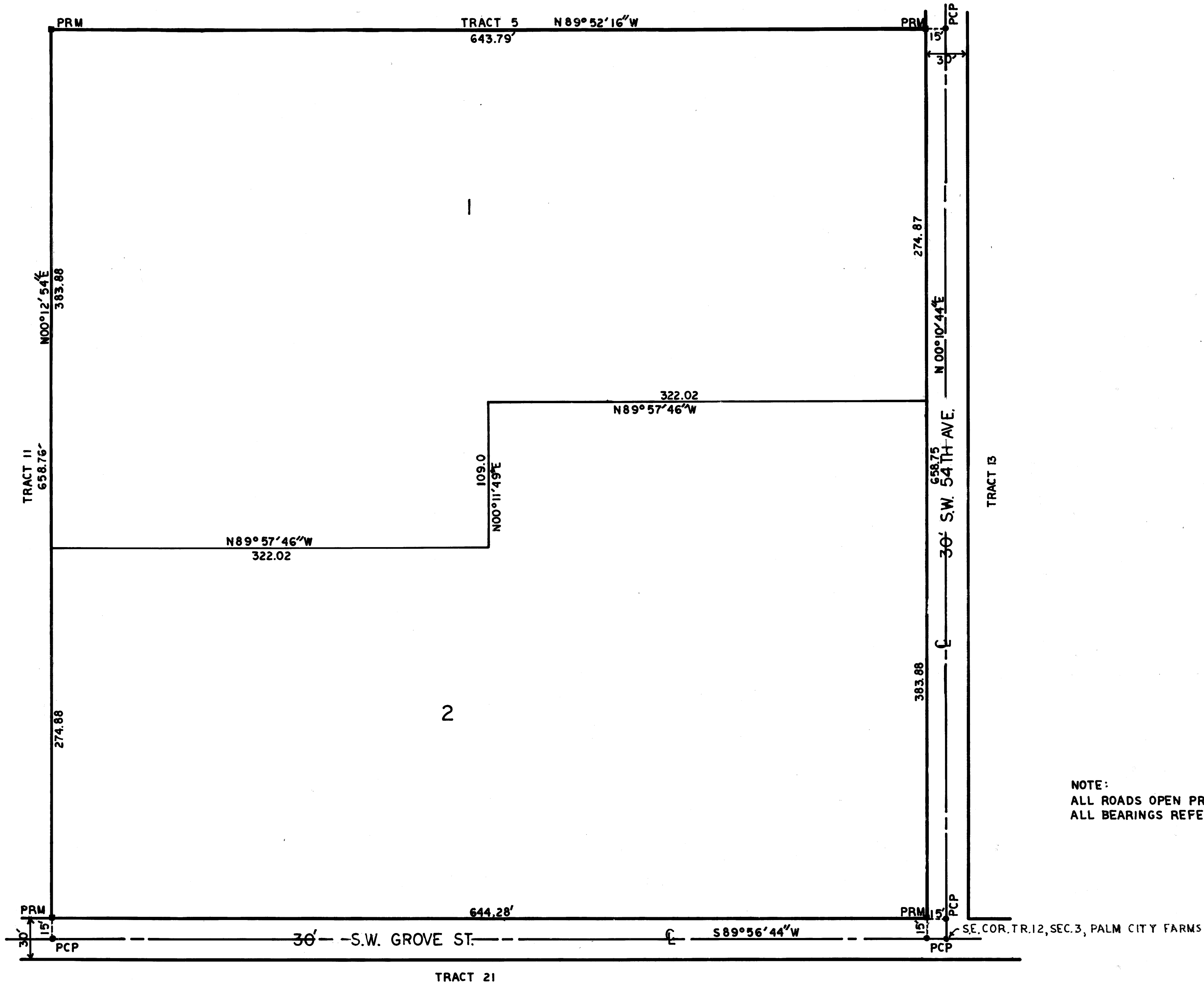
JONES' SUBDIVISION MINOR PLAT

SECTION 3, T39S, R40E, MARTIN COUNTY, FLORIDA
 BEING TRACT 12, SECTION 3, PALM CITY FARMS PLAT BOOK 6 PAGE 42 PALM BEACH
 COUNTY NOW MARTIN COUNTY FLORIDA.

MAY 7, 1974



SCALE 1"=50'



I, LOUISE V. ISAACS, CLERK OF THE CIRCUIT COURT OF
 MARTIN COUNTY, FLORIDA, DO HEREBY CERTIFY THAT
 THIS PLAT WAS FILED FOR RECORD IN PLAT BOOK **6**
 PAGE **55** MARTIN COUNTY, FLORIDA PUBLIC RECORDS.
 LOUISE V. ISAACS, CLERK
 CIRCUIT COURT
 MARTIN COUNTY, FLORIDA
 BY: *Marsha Stokes*
 DEPUTY CLERK
 FILE NO. **215493**

CERTIFICATION OF TITLE

STATE OF FLORIDA
 COUNTY OF MARTIN
 I WILLIAM A. OUGHTERSON A MEMBER OF THE FLORIDA BAR DO HEREBY
 CERTIFY THAT APPARENT RECORD TITLE IS IN THE PERSON, PERSONS,
 CORPORATION OR OTHER ENTITY WHICH EXECUTED THE CERTIFICATE OF
 OWNERSHIP HEREON.

William A. Oughterson
 WILLIAM A. OUGHTERSON
 ATTORNEY-AT-LAW
 OUGHTERSON BLDG.
 STUART, FLORIDA

CERTIFICATION

STATE OF FLORIDA
 COUNTY OF MARTIN
 I, RANDELL E. FISHER, DO HEREBY CERTIFY THAT THIS PLAT OF JONES'
 SUBDIVISION MINOR PLAT IS A TRUE AND CORRECT REPRESENTATION OF
 THE LANDS SURVEYED, THAT SAID SURVEY WAS MADE UNDER MY SUPER-
 VISION, AND THAT THE SURVEY DATA COMPLIES WITH ALL OF THE RE-
 QUIREMENTS OF CHAPTER 177, FLORIDA STATUTES.

Randell E. Fisher
 RANDELL E. FISHER
 FLORIDA SURVEYOR
 CERTIFICATION NO. 1946

APPROVAL

STATE OF FLORIDA
 COUNTY OF MARTIN
 THIS PLAT IS HEREBY APPROVED BY THE UNDERSIGNED ON THE DATE
 OR DATES INDICATED.

Aug 2, 1974 Kenneth J. Ferrari
 DATE COUNTY ENGINEER
8/2/74 J. Demas
 DATE PLANNING DIRECTOR
Aug 2, 1974 Stephen B. Calvert
 DATE COUNTY ATTORNEY

CERTIFICATE OF OWNERSHIP

STATE OF FLORIDA
 COUNTY OF MARTIN
 WE ALBERT E. JONES AND LOUISE M. JONES HIS WIFE DO HEREBY CERTIFY
 THAT WE ARE THE OWNERS OF THE PROPERTY DESCRIBED HEREON.

Albert E. Jones *Louise M. Jones*
 ALBERT E. JONES, HUSBAND LOUISE M. JONES, WIFE

NOTE:
 ALL ROADS OPEN PRIOR TO NOV. 19, 1972.
 ALL BEARINGS REFER TO TRUE NORTH.

RANDELL E. FISHER
 SURVEYOR
 STUART ♦ FLORIDA